

In all cases -

Table: always is 31 cm (12") wider than max.cloth width,

Unusable Table: 46 cm (18") at length stop end

: 23 cm (9") at the cutting end (roll end)

Total unusable: 69 cm (27") of length of table

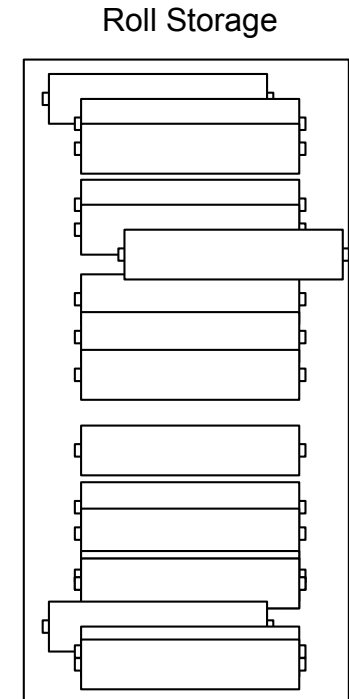
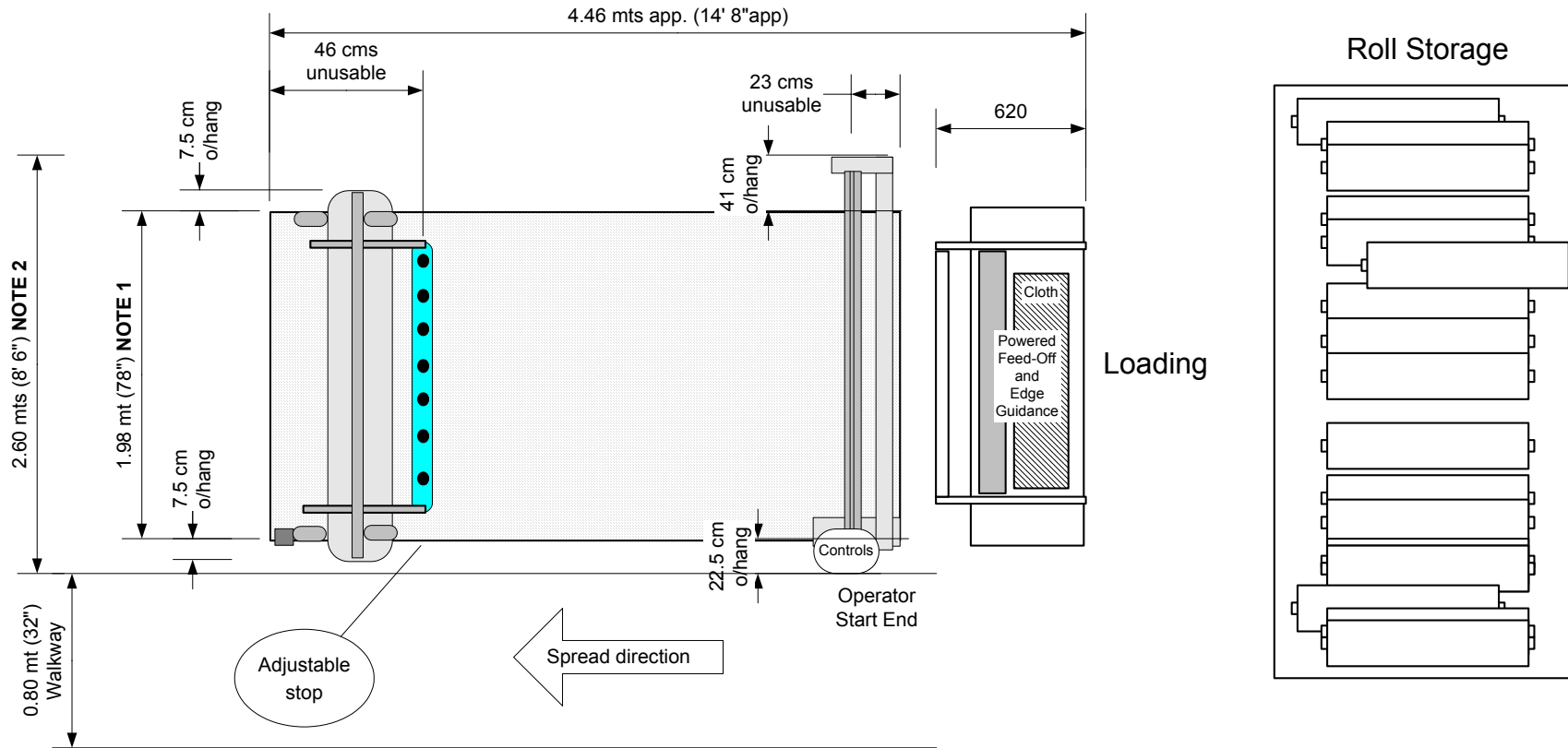
Carriage- table overhang: 7.5 cm (3") each side

Cutter-table overhangs : 22.5 cm (9") o/hang operator side & 41 cm (16") far side.

12' table x 66" width rolls

6mm air line connection

240v mains (1 phase)



Variables: - the length of table can vary according to your needs

Note 1 - the width of table is always 12" wider than the cloth. The above example shows a 66" maximum cloth "pull out" carriage & cross cutter. The table is 78" wide.

Note 2 - the overall width inc. overhangs is 8'6" (102") + walkway at least 32".

If the maximum cloth width was 108", the table is 120" wide, overall width is 145" + walkway at least 32".

Uni-Spread
V:\UNISPRED\tablspec.vsd
Cr: 11/11/1997 Print: 13/08/2002 GB
Overhangs & Allowances